



Leicester Terrace

Northampton

oriordanbond
SALES & LETTINGS



Leicester Terrace

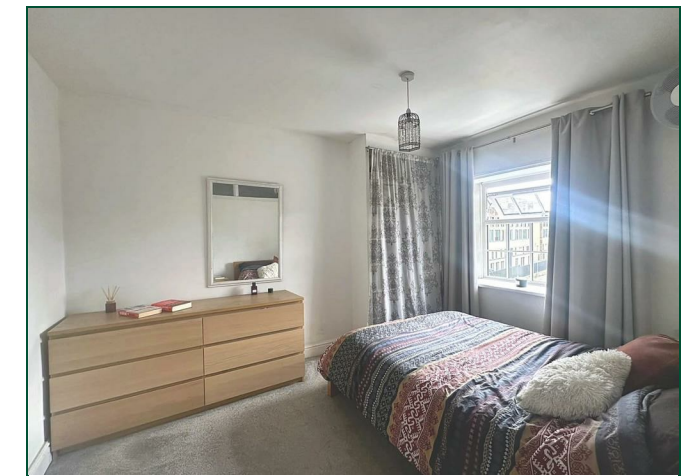
Northampton
NN2 6AJ

Guide Price
£320,000

A rarely available Grade II Listed four storey characterful town house, located in the heart of Northampton, within easy access to local schools and shops and a short journey to the train station. The property offers over 1650 sq. ft. of living space and is well presented throughout.

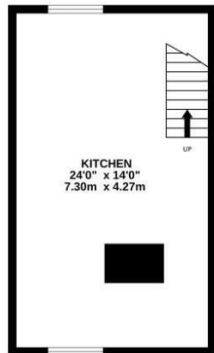
The ground floor comprises entrance hall, open plan sitting/dining room leading through to a utility area, cloakroom/WC and conservatory. The basement offers a large kitchen/dining/family room which is perfect for entertaining. To the first and second floors are four good size bedrooms, with the master bedroom benefitting from fitted wardrobes and en-suite, and there is also a modern family bathroom. Outside is a small low maintenance garden to the front of the property. To the rear is a private self contained garden with large patio area leading to a double garage with electric roller door. Further benefits include uPVC double glazing and gas radiator heating. (B/1674/S)

- Grade II Listed four storey characterful town house
- En-suite to master bedroom
- Large kitchen/dining/family room
- Gas radiator heating
- Private rear garden
- Double garage with electric roller door

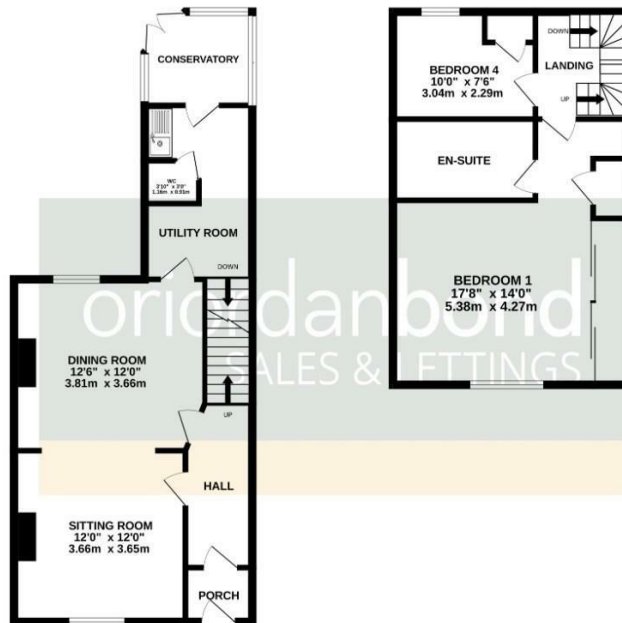




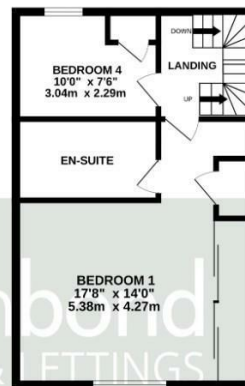
BASEMENT
324 sq.ft. (30.1 sq.m.) approx.



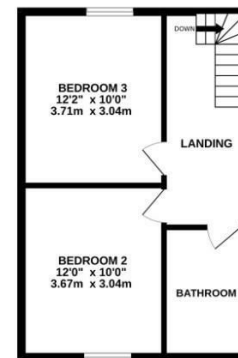
GROUND FLOOR
529 sq.ft. (49.2 sq.m.) approx.



1ST FLOOR
436 sq.ft. (40.5 sq.m.) approx.



2ND FLOOR
385 sq.ft. (35.8 sq.m.) approx.



TOTAL FLOOR AREA : 1674 sq.ft. (155.5 sq.m.) approx.

Whilst every attempt has been made to ensure the accuracy of the floorplan contained here, measurements of doors, windows, rooms and any other items are approximate and no responsibility is taken for any error, omission or mis-statement. This plan is for illustrative purposes only and should be used as such by any prospective purchaser. The services, systems and appliances shown have not been tested and no guarantee as to their operability or efficiency can be given.
Made with Metropix 5/2026



Additional information

- Council Tax Band: D
- Energy Efficiency Rating:

Viewing

Viewing strictly by appointment – details below

Disclaimer

O’Riordan Bond Estate Agents Limited has not tested apparatus, equipment, fittings or services and so cannot verify they are in working order. The buyer is advised to obtain verification from their solicitor or surveyor.

O’Riordan Bond Kingsthorpe Sales
01604 722007

kingsthorpe@oriordanbond.co.uk

